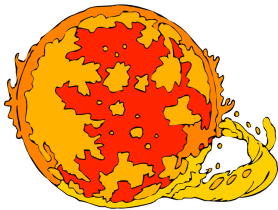


Name \_\_\_\_\_

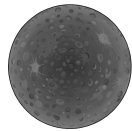
# Planet Matchup

Learn facts about the planets.

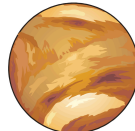
Place the correct number in the box below each picture.



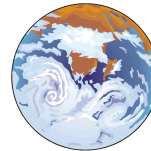
Sun



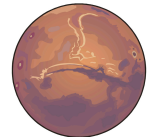
Mercury



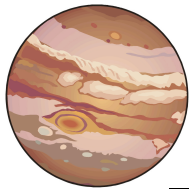
Venus



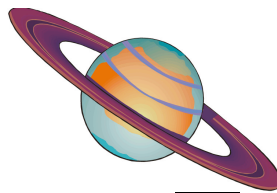
Earth



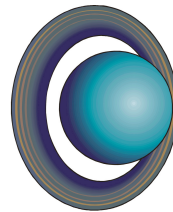
Mars



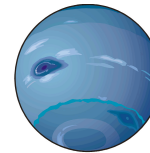
Jupiter



Saturn



Uranus



Neptune



Pluto

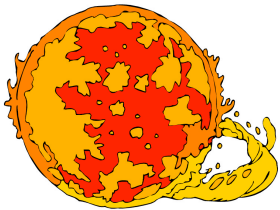
1. This planet is home to "Olympus Mons," the largest volcano found in the solar system.
2. This planet gets very hot -- up to 800 degrees Fahrenheit -- because it is the closest to our star.
3. The third planet from the sun and the fifth largest planet.
4. The solar system's brightest planet that has a rapidly spinning atmosphere.
5. This is one of nearly twelve dwarf planets in our solar system.
6. An average star that makes up about 99 percent of the solar system's weight.
7. The largest planet in the solar system and the gas giant that is closest to the sun.
8. This "Blue Planet" spins on a horizontal axis and has 11 rings.
9. This is another gas giant, and the 8<sup>th</sup> planet from the sun.
10. This second-largest planet is so light that if there were a bathtub big enough, it would float in water.

Name \_\_\_\_\_ **Answer Key**

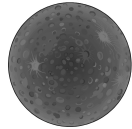
# Planet Matchup

Learn facts about the planets.

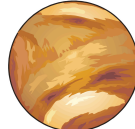
Place the correct number in the box below each picture.



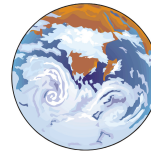
Sun



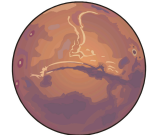
Mercury



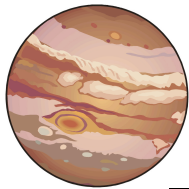
Venus



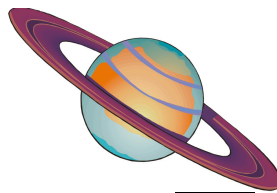
Earth



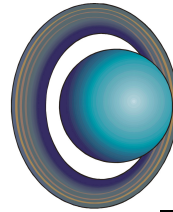
Mars



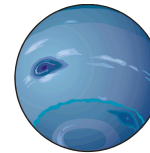
Jupiter



Saturn



Uranus



Neptune



Pluto

1. This planet is home to "Olympus Mons," the largest volcano found in the solar system.
2. This planet gets very hot -- up to 800 degrees Fahrenheit -- because it is the closest to our star.
3. The third planet from the sun and the fifth largest planet.
4. The solar system's brightest planet that has a rapidly spinning atmosphere.
5. This is one of nearly twelve dwarf planets in our solar system.
6. An average star that makes up about 99 percent of the solar system's weight.
7. The largest planet in the solar system and the gas giant that is closest to the sun.
8. This "Blue Planet" spins on a horizontal axis and has 11 rings.
9. This is another gas giant, and the 8<sup>th</sup> planet from the sun.
10. This second-largest planet is so light that if there were a bathtub big enough, it would float in water.